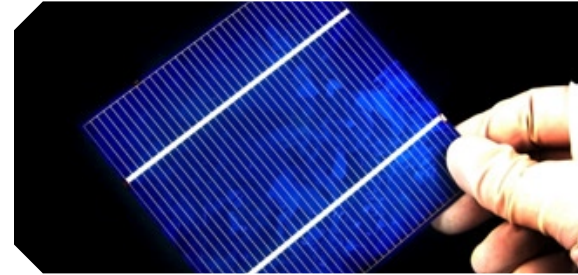


◆ In-Line Rapid Thermal Shock

Removes bow from cells below 180 micron eliminating the need for low-bow paste

The In-line Rapid Thermal Shock (IL-RTS) tool leverages proven Despatch thermal technology from the electronics industry for a revolutionary solar application. The IL-RTS features a simple, in-line process that removes wafer bow by rapidly heating the wafer after cooling, eliminating the need for higher-cost, lower efficiency low-bow paste.

After moving through the firing furnace, cells enter the IL-RTS and are rapidly cooled to stabilize any thermal stresses. Following the cooling, cells are returned to a temperature above the dew point temperature to prevent condensation. The IL-RTS is designed to be compatible with any firing furnace on the front end, and the exit table accepts cell tester automation equipment for a completely seamless in-line process.



FEATURES AT A GLANCE

- ◆ Humidity control- prevents unwanted condensation inside the unit
- ◆ Rapid cooling section- reduce temperature of cell to below -50°C
- ◆ Reheats cell to above dew point temperature to avoid condensation
- ◆ Eliminates need for low-bow paste
- ◆ Enables thinner cells (220µm, 180µm, 160µm) with higher electrical performance

OPTIONS

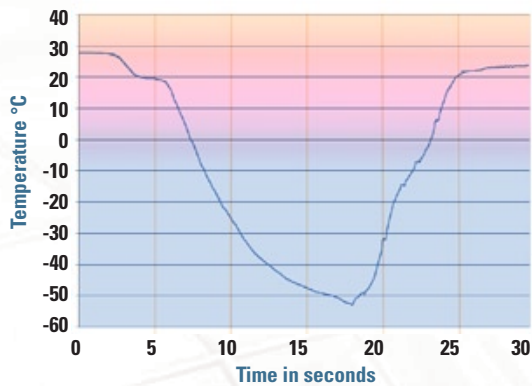
- ◆ Automation light source
- ◆ Data collection



IL-RTS

PRODUCT CONFIGURATION	IL-RTS 30	IL-RTS 60
Overall length	368 cm (145 in)	388 cm (153 in)
Overall width	66 cm (26 in) <i>does not include keyboard</i>	102 cm (40 in) <i>does not include keyboard</i>
Overall height	180 cm (71 in)	176 cm (69 in)
Standard entrance table	15.24 cm (6 in)	15.24 cm (6 in)
Standard exit table	92 cm (36 in)	92 cm (36 in)
Conveyor type	Stainless steel flat flex belt	Stainless steel flat flex belt
Conveyor height above floor	100 cm ± 3.81 cm (39 in ± 1.5 in)	100 cm ± 3.81 cm (39 in ± 1.5 in)
Conveyor width	25.4 cm (10 in)	61 cm (24 in)
Electrical requirements (400V, 3 phase, five wire system)	5.5kVA max, 4.2kVA nominal	8.3kVA max, 6.2kVA nominal
PROCESS CAPABILITIES		
Minimum temperature	-70°C (-94°F)	-70°C (-94°F)
Maximum temperature	200°C (392°F)	200°C (392°F)
Conveyor speed range	76–762 cm/min (30–300 ipm)	76–762 cm/min (30–300 ipm)
Throughput (6x6 in/156x156 mm wafers with 300 ipm belt speed)	2,000 cells per hour	4,000 cells per hour

Notes: Specifications are subject to change without notice. Contact Despatch for most updated specification.



Rapid cooling for optimal results.



SERVICE AND TECHNICAL SUPPORT

service parts: 1-800-473-7373
international service/main: 1-952-469-8230
service fax: 1-952-469-8193

service@despatch.com

GLOBAL HEADQUARTERS

phone: 1-888-DESPATCH (1-888-337-7282)
international/main: 1-952-469-5424
fax: 1-952-469-4513

sales@despatch.com
 www.despatch.com

8860 207th Street West
 Minneapolis, MN 55044 USA

Despatch
 INDUSTRIES